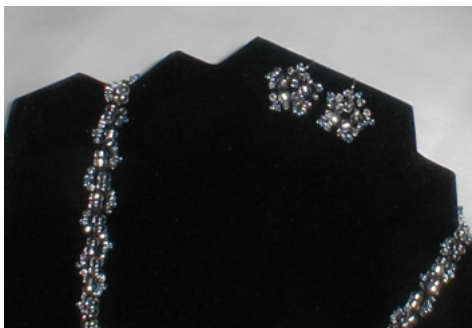


ICE BLOSSOM NECKLACE AND EARRINGS SET

© 2005, DAWN M^CLAUGHLIN



INGREDIENTS

- 1 × 11m spool Kreinik Very Fine (#4) Braid, Black (005)
- 1 × 1m length Kreinik Silk Serica, Black (8050)
- 120 Miyuki size 6/0 seed beads, Silver-lined Crystal (about 10g)
- 130 Miyuki size 10/0 triangle beads, Silver-lined Crystal (about 2.5g)
- 195 Miyuki size 11/0 seed beads, Silver-lined Cornflower Blue (about 2g)
- 1 × clasp for necklace
- 2 × Shepherd's hooks for earrings
- 4 × crimp bead

TOOLS

- 1 tatting shuttle
- 1 crochet hook, 0.6mm/size 14
- size 11 beading needle, big eye needle, or twisted wire needle
- pliers

DIRECTIONS

1. Wind the silk onto the shuttle. In order to avoid wasting silk, I first wind a bit of thread (such as size 30 crochet cotton) onto the shuttle, then tie the end of the cotton and the end of the silk together.
2. String the 10/0 triangle beads (\triangle) and the 11/0 seed beads (\bullet) onto the braid in the following pattern:

$$(\triangle \bullet \bullet \bullet \triangle) \times 65$$

NECKLACE

3. Put the ends of the silk and the braid together, as if to tie ball and shuttle threads, but don't tie a knot.
4. Thread one of the crimp beads onto both threads.
5. Thread one half of the necklace clasp onto both threads. (If the clasp is hook and eye, use the eye, so as to avoid the hook catching on things and being annoying.) Tie the clasp securely about an inch or so from the ends of the threads, making sure you get both threads in the knot.
6. Draw the ends of the threads back through the crimp bead with the crochet hook (or you can use a needle), so that there are now two thicknesses of each thread through the bead. DO NOT crimp the bead yet—just in case, wait until finishing to actually crimp the crimp beads, since there's no way to uncrimp them later. Slide the bead firmly up against the knot.
7. Finally we get to the actual tatting. I prefer to work the ends into the first few stitches, then trim them at the first seed bead. If you don't want to work them in, that's fine, but don't trim them until after you've crimped the crimp bead in that case.

Here's how to read the notation used:

1, 2, 3, ...	number of double stitches
–	Picot
RW	Reverse Work
n^*m	work n double stitches, slide up the beads indicated by $*$ (either \triangle , one triangle bead, or $\bullet\bullet$, three 11/0 beads) on the working/ball thread (the braid), work m double stitches (do not leave a gap between the bead(s) and the next stitch)
$+^\circ$	join with 1 6/0 beads on picot
$+^{\circ\circ}$	join with 2 6/0 beads on picot

Here's how to do the join with the beads: First, put the specified number of 6/0 beads onto your crochet hook. Now hook the picot, and transfer the bead(s) from hook to loop, keeping the picot on the hook.

Next, draw the working thread through the picot and pass the shuttle through this loop, and complete as for a normal join.

All picots in the necklace should be measured using a picot gauge that is as wide as 4 6/0 seed beads, about 12.5mm or 1/2".

Here's the pattern:

Chain 1: $2-3^{\Delta}3^{\bullet\bullet}3^{\Delta}3-2$, RW

Chain 2: $+^{\circ\circ}3^{\Delta}3^{\bullet\bullet}3^{\Delta}3-2$, RW (join is to *first* picot on chain 1)

*Chain 3: $+^{\circ\circ}3^{\Delta}3^{\bullet\bullet}3^{\Delta}3-2$, RW (join is to picot on chain before last, not the one just made)

Repeat from * until there are 54 chains total.

Last Chain: $+^{\circ\circ}3^{\Delta}3^{\bullet\bullet}3^{\Delta}3$, RW, $+^{\circ\circ}2$ (first join is as usual, second join is to last picot made)

8. Cut both threads, about 5cm/2" away from the last double stitch, or just enough to allow you to tie a knot.
9. Thread a crimp bead onto both threads and slide up tightly against the last double stitch.
10. Thread the remaining half of the clasp onto both threads, and tie a knot to hold it in place, as close to the crimp bead as possible.
11. Thread the ends of both threads back through the crimp bead, as with the first one. If desired, you can work the ends through a couple of stitches, using whatever method you prefer. Be careful not to break or split the braid in the stitches, though.
12. Crimp both crimp beads with the pliers.
13. Trim ends.

EARRINGS

15. Open the loops on the shepherd's hooks a bit with the pliers.
16. Hold silk and braid together about an inch (2.5cm) from the ends, but do not tie a knot.
17. Work as follows:

All picots in the earrings should be measured using a picot gauge that is as wide as 2 6/0 seed beads, about 6mm or 1/4".

Chain 1: $1-3^{\Delta}3^{\bullet\bullet}3^{\Delta}3$, RW

*Chain 2: $+^{\circ}3-$, RW, $3^{\Delta}3^{\bullet\bullet}3^{\Delta}3$, RW

Repeat from * until there are 5 chains total.

18. Cut both threads about an inch (2.5cm) from the last double stitch.
19. If necessary, twist the chains until they arrange nicely into a star or flower shape, with all the triangle and seed beads to the outside.
20. Draw the thread ends through a crimp bead, with one set of ends going in each direction. (So you have one set of ends on either side of the bead.)
21. Pull firmly on the ends, making sure that there is as little extra space between the first and last chains as possible. While holding the ends in place, crimp the crimp bead with the pliers. Be sure to crimp very firmly.
22. Trim ends close to crimp bead.
23. Slip earring onto one of the shepherd's hooks.
24. Twist the loop of the shepherd's hook closed with the pliers.
25. Repeat these steps for the second earring.
26. You're done—enjoy. 😊

COMMENTS, TIPS, ETC.

The amounts given in the ingredients are enough to make an 18" (46cm) necklace, and two 5-petal earrings. To make a longer necklace (or bigger earrings), you'll need an additional 6 size triangle beads, 9 size 11/0 beads, and 6 size 6/0 beads per inch of necklace, or 2 triangle beads, 3 11/0 beads, and 1 6/0 bead per earring petal. Of course, you may also need a bit more silk. As for the braid, you should be able to get an extra couple of inches out of one 11m spool, depending on your tension, but for more than 24" (61cm) total (2 earrings plus 20" necklace), be prepared to need a second spool.

If you don't have any silk handy, do *not* try to use crochet cotton in its place. There is a lot of friction on the shuttle thread, as there are no rings in this pattern, only chains. There is a very good chance that the cotton will erode and break on you (every time I've tried to use cotton, it's broken on me, at any rate). In place of silk, any strong, very *slippery* thread would probably work. Make sure it's about as heavy as size 10 crochet cotton (or use multiple strands of thinner thread, but the thinner a strand, the more likely it is to fray).

If you don't have crimp beads, the necklace can be worked in much the same way as described, just work in the ends a little further than you would with the crimp beads. The directions for the earrings, however, will not be appropriate if crimp beads aren't used. Instead, knot all ends together in place of the crimp bead. Test this knot (and all others where there is no crimp bead) very carefully before trimming the ends. Be sure to avoid putting the shepherd's hook through the same part of the design as the knot.

For the most consistent appearance, always turn the work in the same direction when reversing work.

If you like, try twisting the necklace prior to wearing it, so that the 11/0 bead "blossoms" are all pointing in different directions, instead of lying flat.